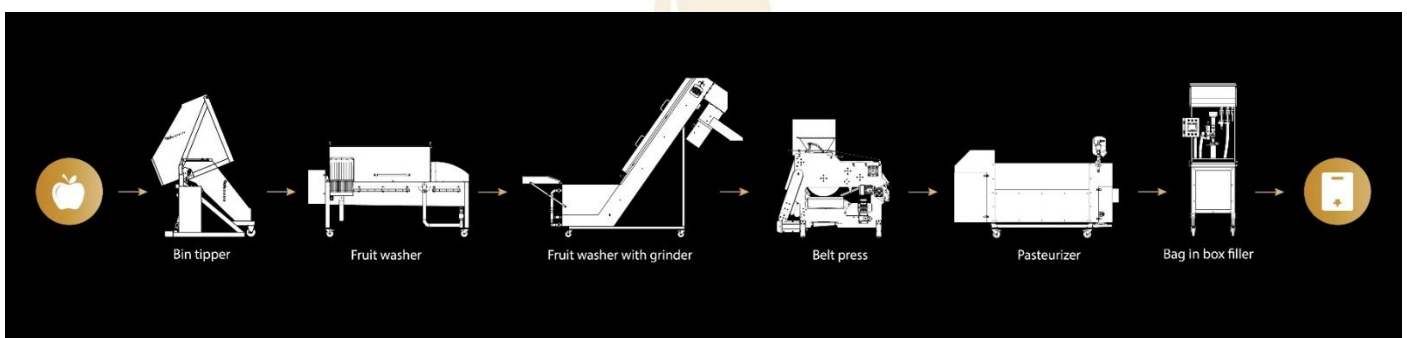


PROFRUIT MACHINERY

Official Manual & Instruction Document

220L FILLING GUN



JSC/UAB PROFRUIT MACHINERY

www.pro-fruit.com

info@pro-fruit.com

Ph. Nr. +370 633 64143

INFORMATION ABOUT MANUFACTURER

Manufacturer: UAB ProFruit Machinery

Representator: director Pijus Lopata

Address: Razes g. 27, Peskojai v., LT-92385 Klaipėda county, Lithuania

Company code: 305202037

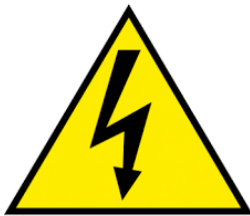
VAT code: LT100012484812

E-mail address: info@pro-fruit.com

Website: www.pro-fruit.com

Warning signs

There are special warning and prohibition signs put on the machines which are meant to inform the user about danger and keep everyone – people and machinery – safe at all situations. The meaning of each sign is described below.



**Control console.
required
High voltage**



**Hearing protection
required**



**Work shoes
required**



The risk of limb injury.

It is mandatory to remain alert and protect the limbs.



The risk of limb injury.

Moving parts of the machine.



Hot surface.
Risk of getting burned.



Warning. Sharp parts of machine
Risk of limb injury.

GENERAL REQUIREMENTS

General instructions:

- Ambient air temperature +8...+35° C.
- Relative humidity (when temperature +25 °C) iki 70%.
- Atmospheric pressure, kPa 84-107.
- The Law on Occupational Safety and Health of the Republic of Lithuania, the General Provisions and Safety Instructions for the Use of Work Equipment and the Laws on Occupational Safety and Health of the European Union must be observed while using the machine.

220L Filling gun usage manual

STEP 1. Put the bag into the drum and assemble the bag holder tool



Make sure that bag holder tool is tightened on drum corners

STEP 2. Open the bag manually and place the filling gun in it.

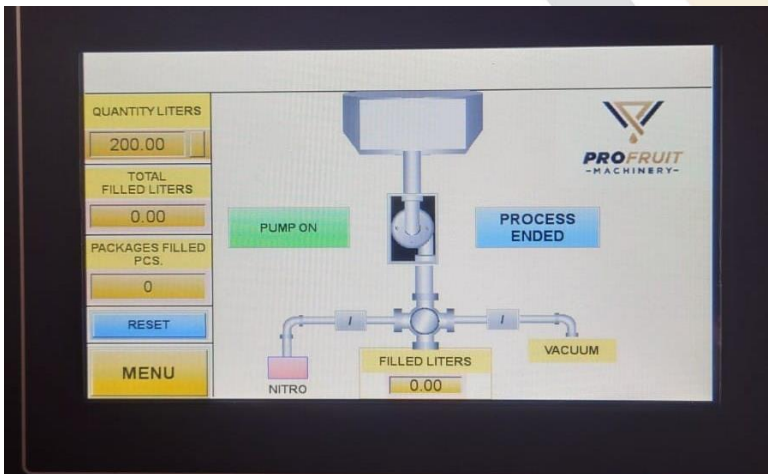


Make sure that filling gun is tightened on it's holder

STEP 3. Connect the filling gun with filler. Place the nozzle into the gripper. If you will fill directly from pasteurizer, just skip this step and connect the filling gun directly to pasteurizer with your own connection



Place the nozzle into the gripper.



Set how many liters you want to fill on filler screen.

STEP 4. Pull the filling gun handle, fixate it with the small button on the left side. Press start on the filler or start pasteurizer. After filling is complete, take out the filling gun and close the bag manually.



Button to fixate the opened filling gun.

ADDITIONAL INFORMATION AND TIPS.

1. Make sure you have enough liquid in the tank if you fill through filling machine. Filling machine will stop if it is not enough liquid given. We recommend to have liquid ready and connect the filler directly from bigger tank. Our you can connect filling gun directly to pasteuriser and fill in small pasteurised doses.
2. When filling process is ongoing, make sure to move and pull bag manually to have enough space for it to fill up fully.
3. Check the bag gland when filling, so it wont move from the gripper.